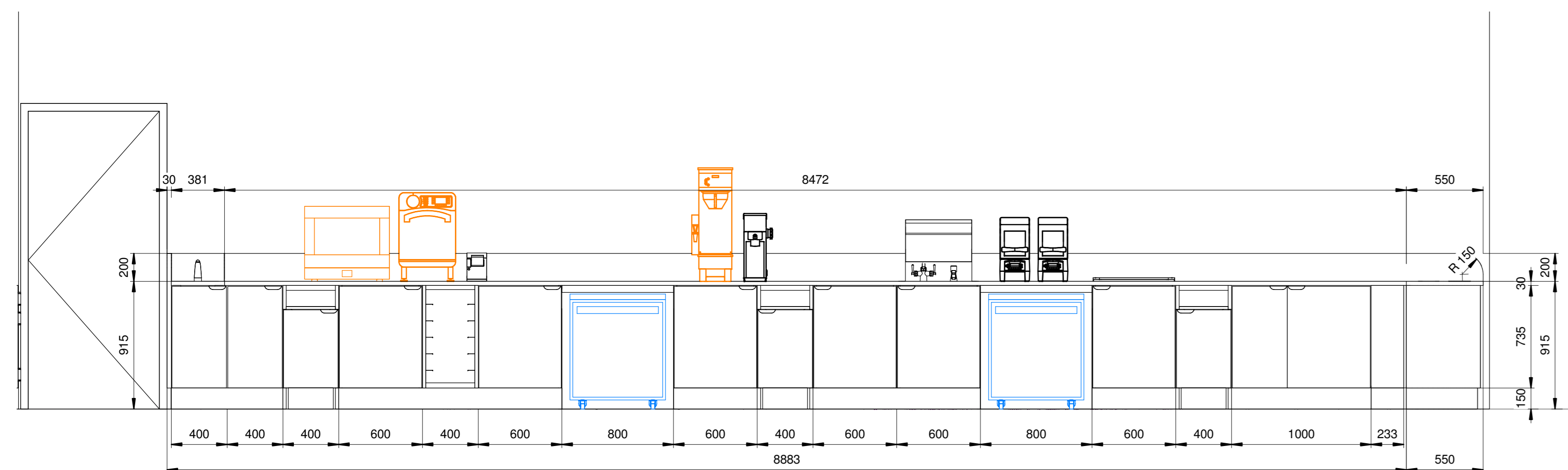
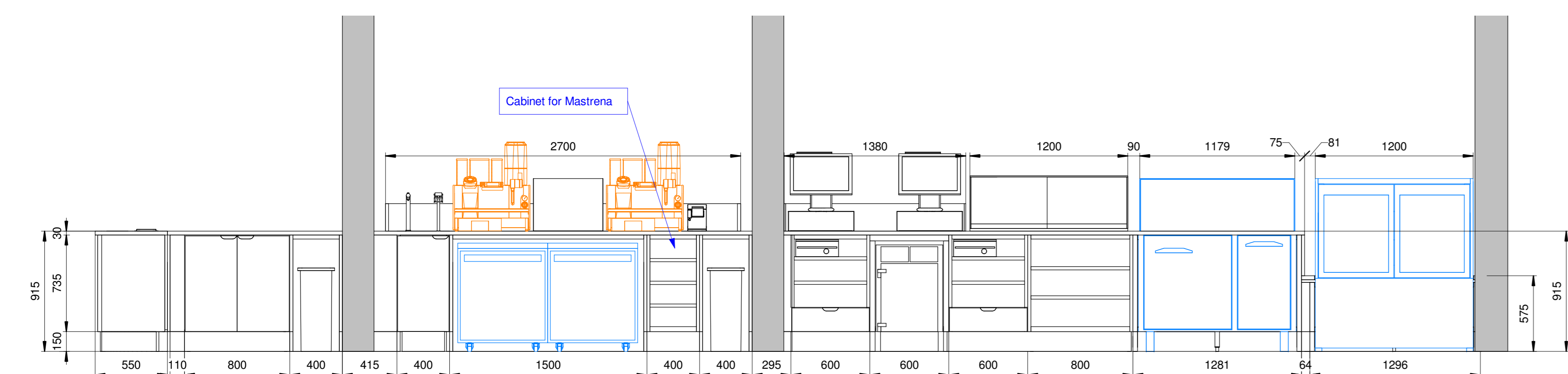


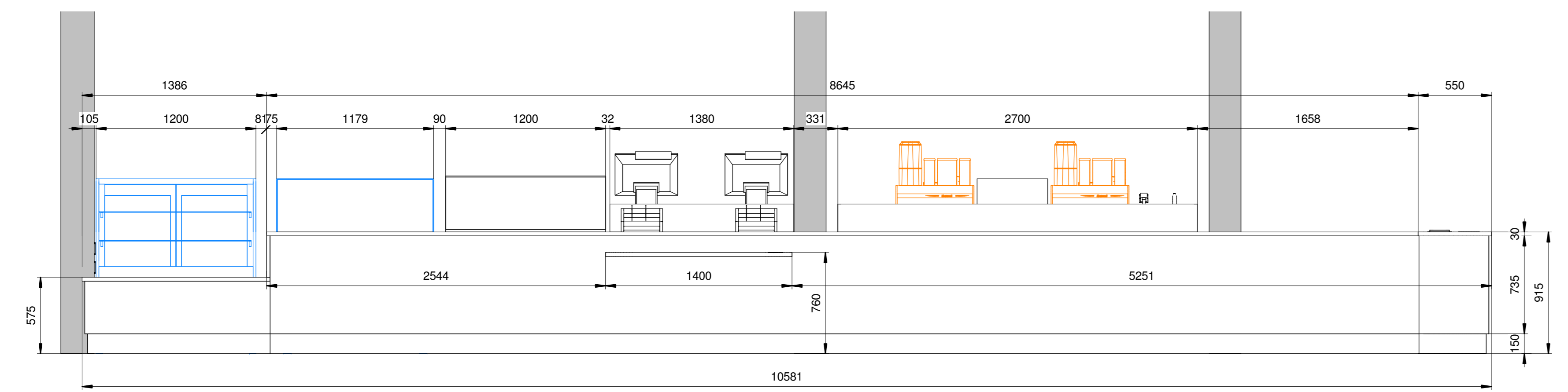
1 K1 Layout
1 : 25



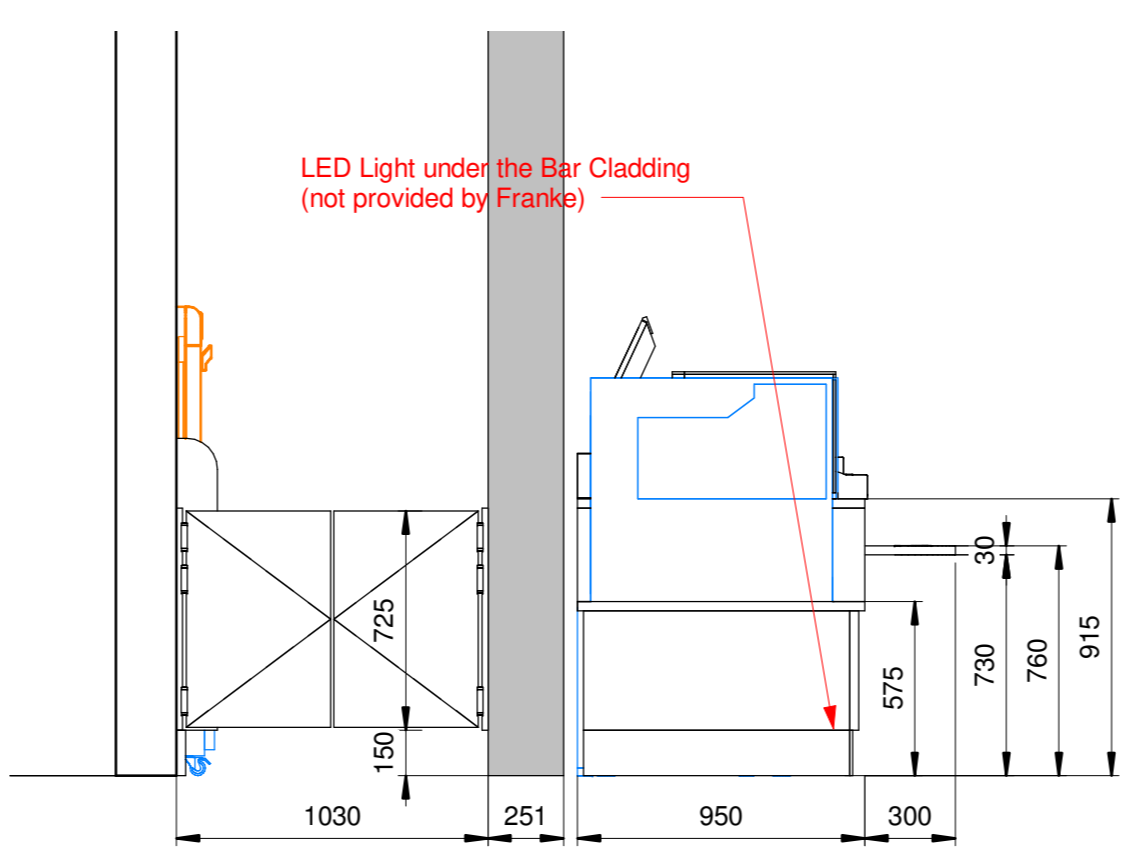
2 K1 Backline
1 : 25



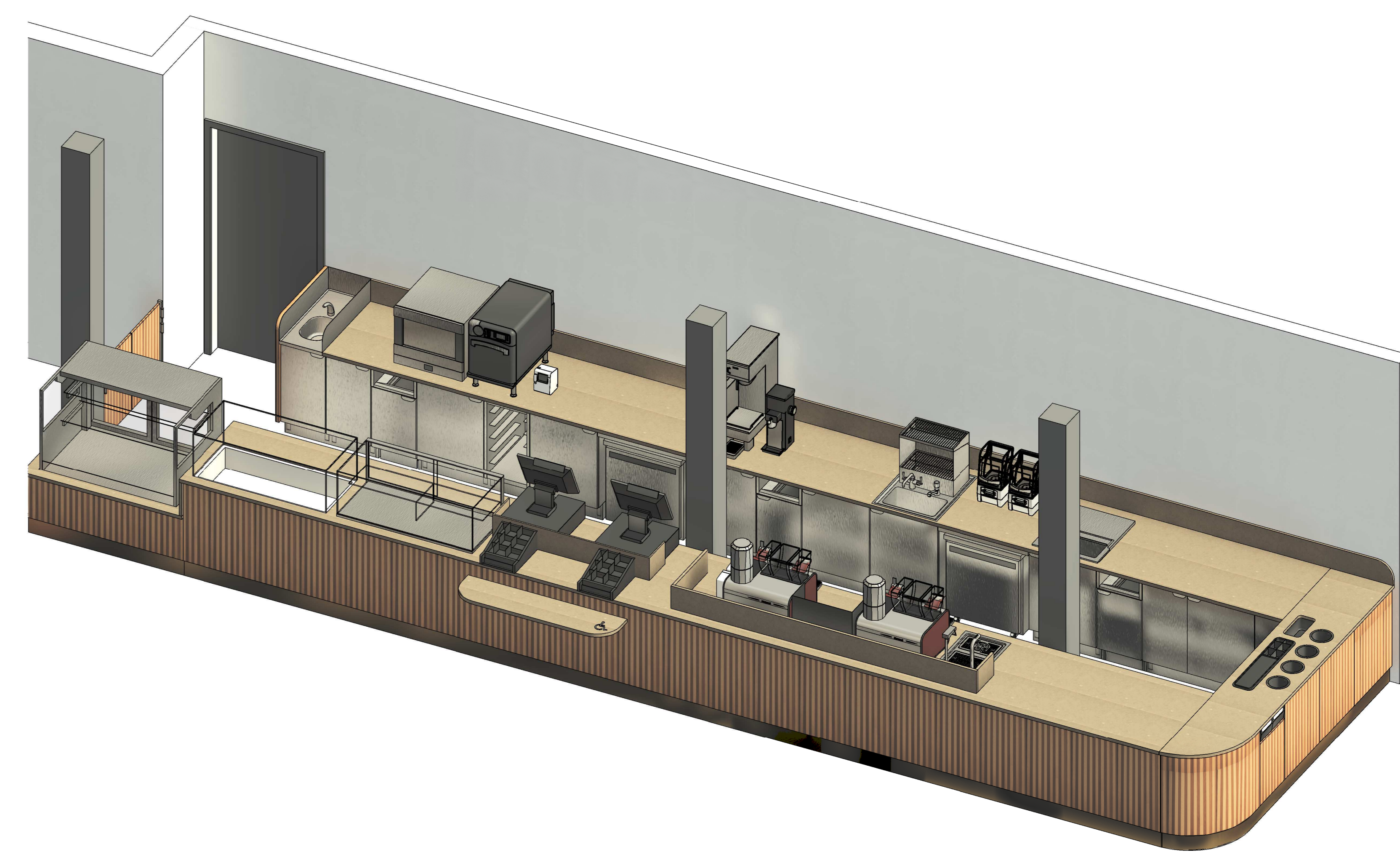
3 K1 Frontline
1 : 25



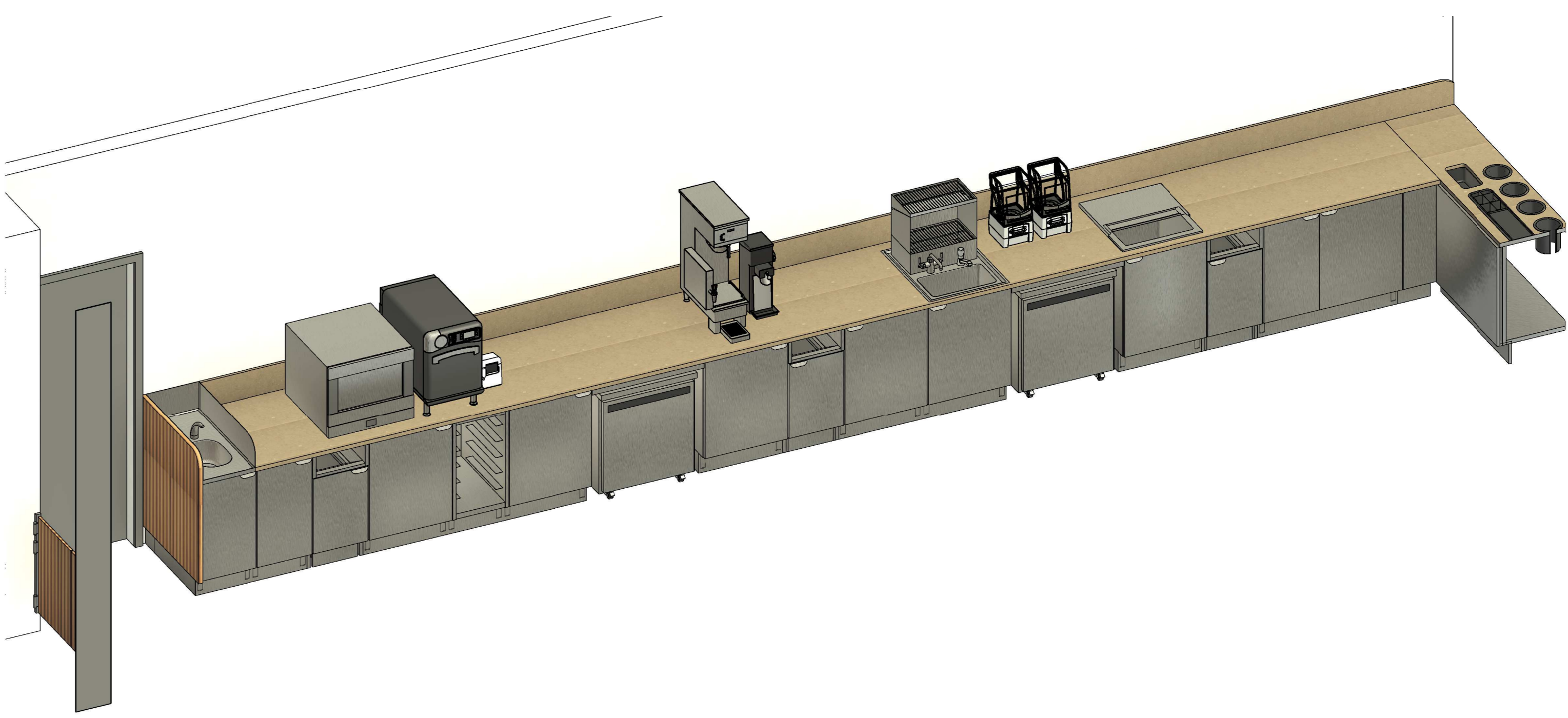
4 K1 Frontline Customer View
1 : 25



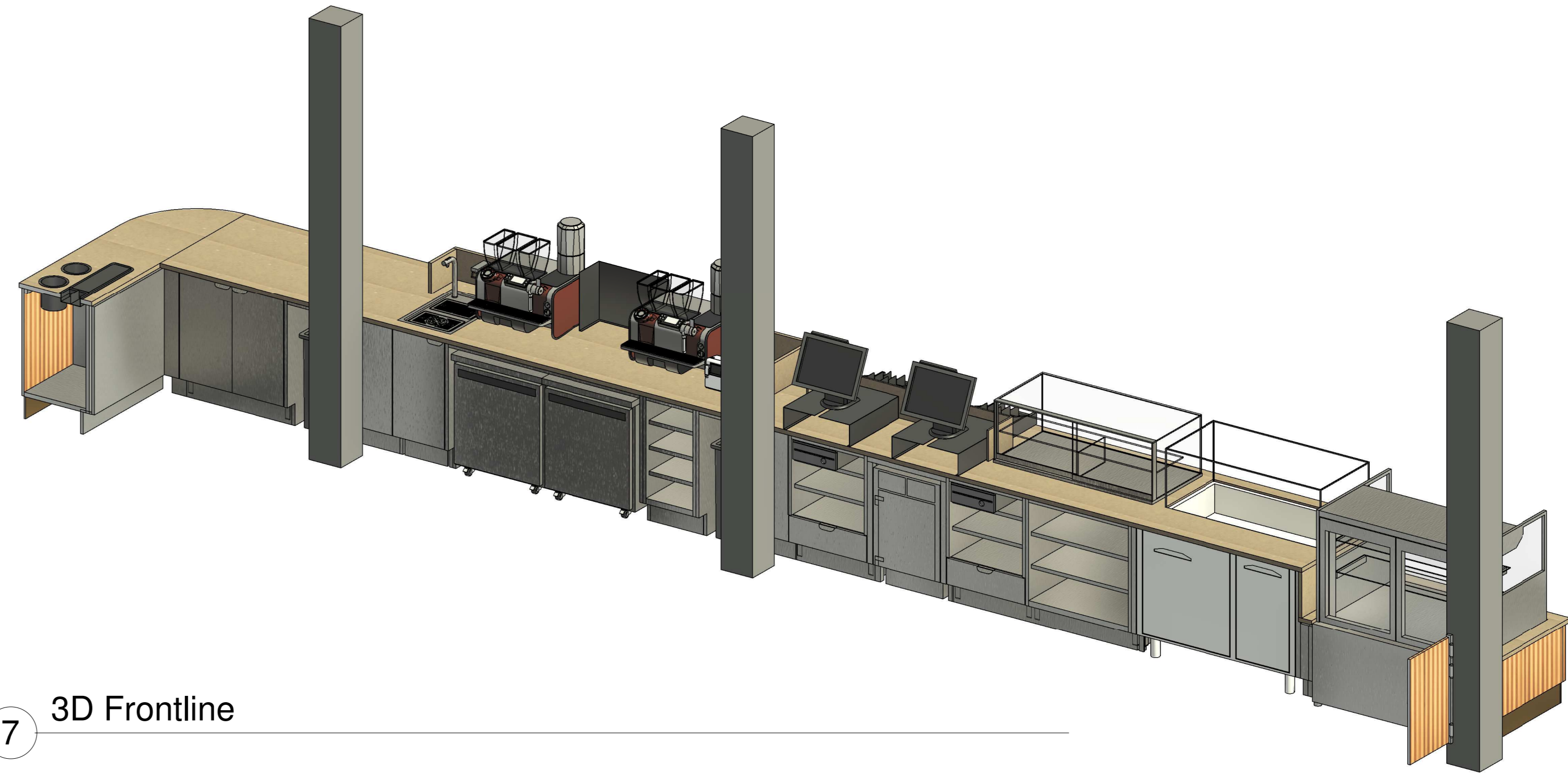
8 K1 Section View
1 : 25



5 3D



6 3D Backline



7 3D Frontline

MATERIAL PALLETTE				
CP0078 Composite, Silentstone by Consentino Coral Clay Quartz	WD0077_MAD105 Wood Bar Cladding Vertical Slat Peaks	S/S Stainless steel	MT0038_PO Metal Brushed Brass	MT0028 Metal Flat Black Powdercoated

DISCLAIMER

General:
All structural changes shown on this layout are nonbinding planning proposals. All proposals must be reviewed & approved by a registered architect. Franke accepts no liability or responsibility for all structural (static and/or substantial construction) proposals.

Electrical and sanitary installations:
All electrical and sanitary installations, as well as any other water supplies, must be carried out in accordance with local laws and regulations. Should any specifications on the drawing not be in compliance with such regulations, please contact the layout provider.

Revision	Index	Description	Date	Drawn by
E		New floorplan, changes Bar		BJ103
D		Changes POS station		BJ103
C		Changes in the Frontline		BJ103
B		Layout adjusted according to new DID		BJ103

Customer	Project Name	Address	Postcode	City	Country
Starbucks	Restaurant	2309 AD Capelle a.d. IJssel	5037898	Kapervik 85	NLD

Project Name	Project No.	Project Manager	Project Engineer
NEW STORE		Bernd Genser	